

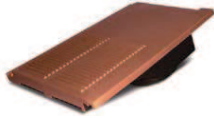


Tile ventilators

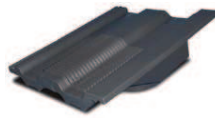
Ventilators to suit most common styles of roof tiles



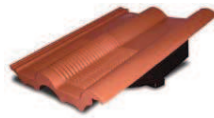
TV62 MEN sepia



TV62 MDA terracotta



TV62 MLM anthracite



TV62 FRA red



TV8 terracotta

Use

- To provide inconspicuous ventilation to suit most types of roof tiles
- Suitable for high or low level venting
- Can be used for mechanical extraction or with soil pipes

Features and benefits

- High performance while retaining the aesthetics of roof design
- Suitable for use with a wide range of roof tile profiles
- Range of standard colours and profiles
- UV stable for continuous exposure
- Quick to install, requiring no special tools or maintenance

Quality

- Satisfies all NHBC requirements
- Meets requirements of Building Regulations Approved Document Part F1, Part F2 and BS 5250:2011 'Code of practice for control of condensation in buildings'

Material and colour choice

- TV8 in PVC-u
- TV62 in polypropylene
- Available in terracotta, red, sepia and anthracite

Products in the system

TV8 plain tile ventilator

For small, non- interlocking clay and concrete plain tiles. It is suitable for high/low level venting in roofs with minimum pitches of 35° (clay tiles) and 40° (concrete tiles). Each vent has a slotted inhibitor to keep out large insects and vermin and requires a minimum of batten and tile trimming during installation. Free vent area 6250mm².

TV62 profiled tile ventilator

Profiles to suit most common styles of interlocking roof tiles. Suitable for high or low level venting in roofs with pitches of 22.5° and over and can be used to supplement or replace other ventilation such as dry ridge, abutment or eaves systems. Also suitable for ventilation of compartmental roof spaces, such as fire walls. Free vent area 15,000 mm².

Installation advice

- For TV8 a 'V' cut is made immediately below the batten. The "pennant" is pulled up tightly round the batten and pinned in place
- For TV62 at each ventilating tile position the underlay must be cut to form the required opening and its edge folded, and where necessary, supported to prevent the ingress of water. The vents are then laid and fixed by the roofer in place of an ordinary tile

How to order

Determine the quantity required according to the use for which the ventilator is being put, specify the type of tile being used and the colour.

Bill of quantity

NBSPlus

G20 Carpentry/Timber Framing/First Fixing

Clause

 900⁺ EAVES SOFFIT VENTILATORS

- Manufacturer: **Timloc Building Products, Rawcliffe Road, Goole, East Yorkshire, DN14 6UQ. Tel: 01405 765567, Fax: 01405 720479. Web: www.timloc.co.uk**
- Product Reference: **TV8/TV62 MEN etc**
- Type: **Plain Tile Ventilator/Profiled Tile Ventilator**
- To suit Tile: **Plain Tile/Profiled Tile Marley etc**
- Colour: **Terracotta/Red/Sepia/Anthracite**

Product codes

Tile ventilators

Available in terracotta, red, sepia and anthracite

Description	Suitable for	Product code
Plain tile ventilator		TV8*
Profiled tile ventilator	Marley Mendip Redland Grovebury and similar profiles	TV62 MEN*
Profiled tile ventilator	Marley Modern, Russell Grampian Redland Mini Stoneworld and similar profiles	TV62 MDA*
Profiled tile ventilator	Marley Ludlow and similar profiles	TV62 MLM*
Profiled tile ventilator	Marley Double Roman Russell Double Roman Redland Landmark Double Roman Sandtoft Double Roman and similar profiles	TV62 FRA*

* Include colour choice option (TE=Terracotta, RE=Red, SE=Sepia, AN=Anthracite)