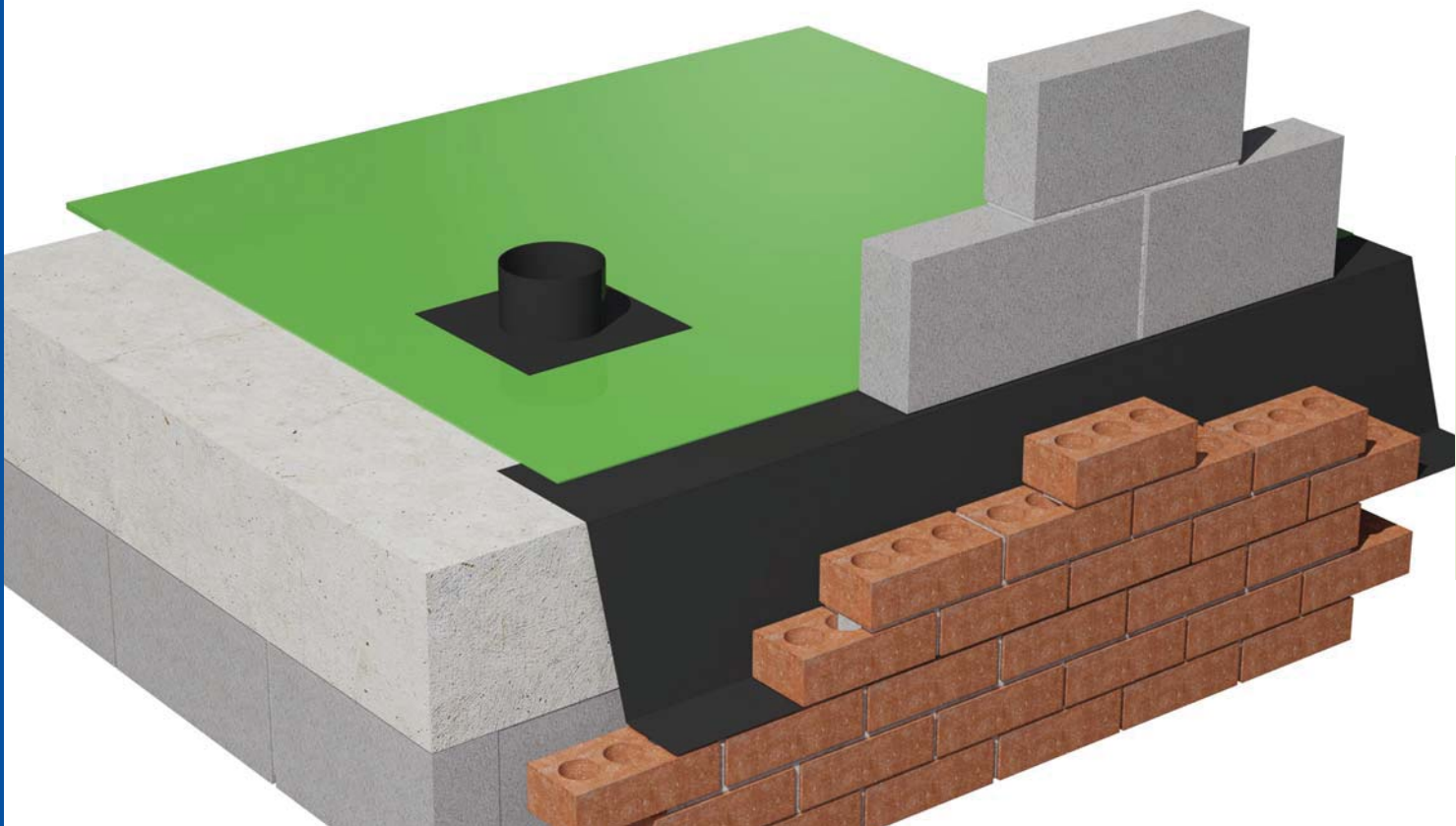


Gas barrier and damp proofing accessories



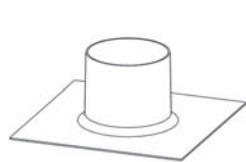
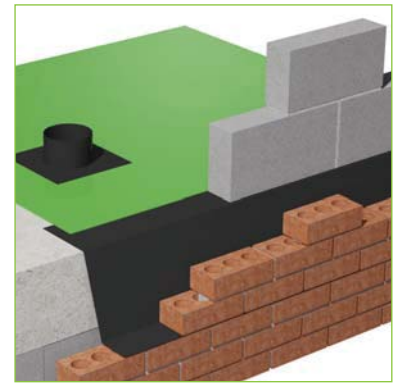
Gas barriers and damp proofing

- 2-4 Gas barrier and damp proof membrane cavity tray systems and accessories
- 5 Damp Proof coursing accessories

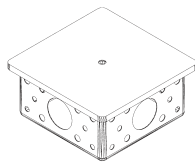


Gas barrier and damp proof membrane cavity tray systems and accessories

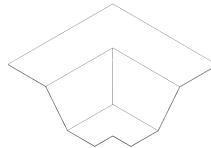
Working in conjunction with radon, methane, CO₂ and hydrocarbon gas barrier systems to contain rising gasses across the footprint of the building.



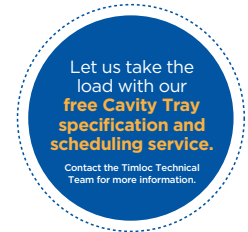
Top hat collar



Radon sumps



Corner units



Use

- In areas outlined in BRE document 'Radon' guidance on protective measures in new dwellings
- When gas protection is required across the footprint of the building
- Crossing cavity wall constructions to maintain gas barrier integrity
- Forming internal perimeter trays to allow membranes continuity
- Collars for service pipe protrusions
- Following a risk assessment where the requirement is for a good gas protection measure against Radon, Co₂, Methane and Hydrocarbon
- To be designed and installed in a continuous system around the whole building perimeter

Features and benefits

- Preformed mouldings eliminate the need for site fabrication to prevent errors through poor workmanship
- Easy to handle, flexible, tough, durable and puncture resistant
- Can be used for multi-storey or high-loading applications – will not extrude under high loads up to the point of compression failure of wall
- Wide range of standard components with special tailor made accessories also available
- Fully itemised scheduling service

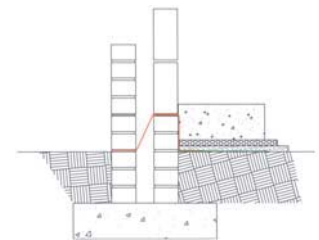
Quality

- Manufactured to BS EN ISO 9001 and BS EN ISO 14001
- Satisfies all NHBC requirements
- Meets BRE requirements
- Complies with Building Regulation Approved Documents C1 and C2
- Meets all relevant British Standards

Material and colour choice

- Formed in 2mm medium density polyethylene and/or polypropylene
- Available in black only

Products in the system



Preformed cavity tray system

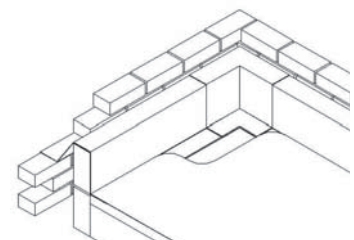
Works by reducing on site exposure to the membrane through the use of independent preformed and rigid cavity trays installed to the perimeter of the building, in both the cavity wall with our PCT range and installed at the slab edging with our SPT range.

PCT Range - Horizontal cavity wall perimeter trays

Supplied in 2.5 metre lengths and manufactured from heavy duty 2mm polypropylene. They should be installed continuously around the external perimeter of a building to allow the membrane to be laid at a later stage and so prevent damage as building works proceeds.

SPT Range - Horizontal slab perimeter trays

Supplied in 2.5 metre lengths and manufactured from heavy duty 2mm polypropylene. They should be installed continuously around the internal slab pour area allowing the membrane to be laid at a later stage and so prevent damage as building work proceeds.



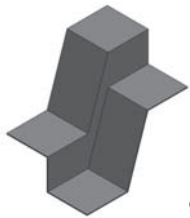
Corners - PCT and SPT ranges

Available in both SPT and PCT ranges and manufactured from heavy duty 2mm polyethylene. The standard corners are 90° but a wide range of options are available and selection is by cavity size, wall construction and damp proof course or slab rise required.



Gas barrier and damp proof membrane cavity tray systems and accessories

Working in conjunction with radon, methane, CO2 and hydrocarbon gas barrier systems to contain rising gasses across the footprint of the building.



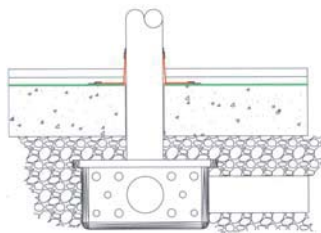
Change of level units

Stopends & change of level units

Available in the PCT range and manufactured from heavy duty 2mm PP. Suitable if breaks appear in the natural run of the cavity tray system, and available in cavity size and rise options with 75, 150 and 225mm steps.

Radon sumps (RSUMP01)

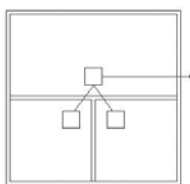
Prefabricated sumps are required when a sub floor depressurisation is required under full radon protection. The sump is installed beneath the floor slab in non suspended floor applications and vented to atmosphere via a connecting 110mm drainage pipe to an external source and capped off with proprietary products i.e. air bricks & telescopic under floor vents or roof vents.



Radon sump illustrating horizontal and vertical 110mm soil pipe for venting with top hat collar

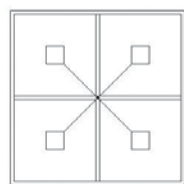
The minimum number of sumps required is one per dwelling, but this will be dependent on the foundation construction of the building.

3x sumps req.



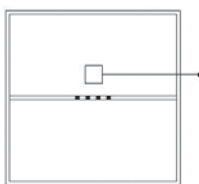
Vented load bearing masonry

4x sumps req.



Non-vented load bearing masonry

single sump req.



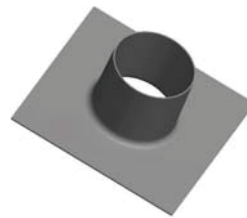
Top hat pipe collars

(TH055, TH082, TH110, TH135, TH160)

Top hat pipe collars are available in sizes from 55mm to 160mm. A standard range of preformed pipe sleeves that are designed to have sealing tape applied to the unit base to offer a unit for sealing to a gas barrier and at the intersection of pipe projections.

Common applications are for soil /service pipes passing vertically via a gas barrier or membrane to maintain a continuous seal. Top hats are suitable for installation at ceiling level for pipe protrusions to assist in reducing air leakage.

All sealing tapes (GTAPE 03) and fixing bands (JCLIP 6 or 7) are supplied separate to top hat units.



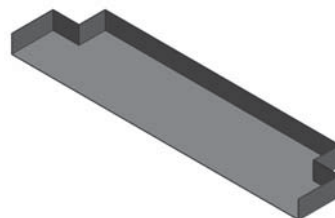
Top hat collar

Jubilee clips size 6 (110mm - 140mm)

Jubilee clips size 7 (135mm - 160mm)

Televent gas sleeve tray (TST01)

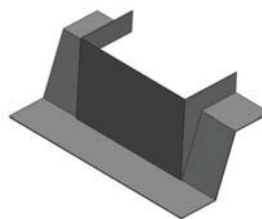
For use when telescopic under floor vents need to pass through a perimeter cavity and still maintain gas tight integrity.



TPT01

Threshold internal protection tray (TPT01)

Designed for detailing rebated areas inside door threshold to maintain water and gas tight integrity without having to trim membrane to fit. Due to possible variations in size, threshold dimensions will be required.



Column cloak

Column cloaks (made to order)

Non standard applications can require gas and water integrity around columns and stanchions. Timloc will design and produce rigid preformed units that are user friendly: simply contact our technical department.

Gastite sealing tape (GTAPE03)

A 2mm x 50mm wide double sided modified polymer strip, protected on both sides with a silicone release paper. The principle is to apply between parts of the system in continuous joint lengths to achieve a gas tight seal. Also available in 100mm width rolls (GTAPE01).

Girth tape (GTAPE02)

A single sided 75mm wide tape with an aggressive adhesive to one side, used to cap overlaps that have been sealed with gastite tape to prevent uplift of joints when concrete slab or screed is poured.



Gas barrier and damp proof membrane cavity tray systems and accessories

Working in conjunction with radon, methane, CO₂ and hydrocarbon gas barrier systems to contain rising gasses across the footprint of the building.

Page 3 of 3

How to order

- Timloc can prepare a comprehensive schedule and quotation service. Forward full working drawings and specifications to our technical department
- Orders can be established from written quotations by stipulating number issued

Bill of quantity (Gas barrier accessories)

n5Plus

F30 Accessories/sundry items for brick/block/stone walling

Clause

- 360 GAS RESISTANT CAVITY TRAY ACCESSORIES
- Manufacturer: **Timloc Building Products, Rawcliffe Road, Goole, East Yorkshire, DN14 6UQ. Tel: 01405 765567, Fax: 01405 720479. Web: www.timloc.co.uk**
 - Reference: e.g. **Top hat pipe collar**
 - Size: e.g. **110mm**
 - Product code: e.g. **TH10**
 - Use: For use in all types of floor construction to protect buildings against gas penetration from the ground. To cover the full footprint of the building and to incorporate proprietary accessories for pipe, vent protrusions.

Product codes

Active-guard radon barrier accessories

Description	Product code
Top hat pipe collars 55mm - 160mm	TH055 - TH160
Jubilee clips size 6, 7	JCLIP 6 or 7
Radon sump 350mm x 350mm	RSUMP01
Threshold internal protection tray 930mm	TPT01
Televant gas sleeve tray (cavity tray profile req.)	TST01
Gastite sealing tape 50mm x 15mtr	GTAPE03
Girth tape 75mm x 33mt	GTAPE02

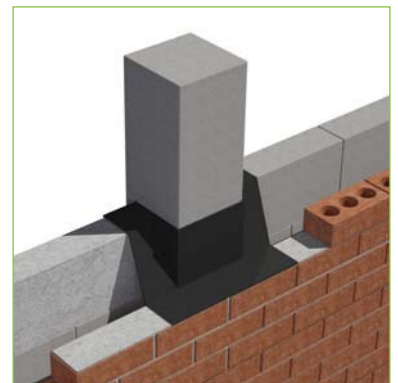
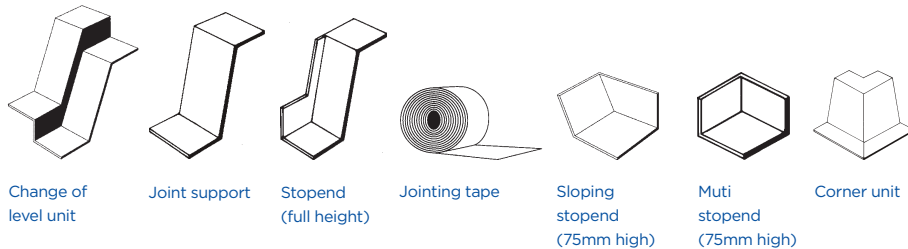
SPT150 Slab perimeter cavity tray 150mm rise	5107
SPT150 Corner cavity tray 90° - 150mm rise	5122
SPT225 Slab perimeter tray 225mm rise	5108
SPT225 Corner cavity tray 90° - 150mm rise	5123

	Product codes to suit cavity widths of		
	50mm	75mm	100mm
PCT150 Perimeter cavity tray 150mm rise	5101	5102	5103
PCT150 External 90° corner cavity tray	5110	5112	5114
PCT150 Internal 90° corner cavity tray	5111	5113	5115
PCT150 Cavity tray stopend RH	5130	5132	5134
PCT150 Cavity tray stopend LH	5131	5133	5135
PCT150 Change of level 75mm step	9060	9063	9066
PCT150 Change of level 150mm step	9061	9064	9067
PCT150 Change of level 225mm step	9062	9065	9068
PCT225 Perimeter cavity tray 225mm rise	5104	5105	5106
PCT225 External 90° corner cavity tray	5116	5118	5120
PCT225 Internal 90° corner cavity tray	5117	5119	5121
PCT225 Cavity tray stopend RH	5136	5138	5140
PCT225 Cavity tray stopend LH	5137	5139	5141
PCT225 Change of level 75mm step	9070	9073	9076
PCT225 Change of level 150mm step	9071	9074	9077
PCT225 Change of level 225mm step	9072	9075	9078



Damp proof coursing accessories

Products allowing a complete horizontal cavity tray system to be formed



Use

- Wherever DPC is used to form a horizontal cavity tray

Features and benefits

- One piece seamless mouldings eliminate the need for site fabrication to prevent errors through poor workmanship
- Easy to handle, flexible, tough, durable and puncture resistant
- Fully compatible with 9000 polymeric dpc
- Can be used for multi-storey or high loading applications - will not extrude under loads up to the point of compressive failure of wall
- Wide range of standard components with special, tailor-made accessories also readily available

Quality

- Satisfies all NHBC requirements
- Manufactured to BS EN ISO 9001 and BS EN ISO 14001
- Complies with all relevant Building Regulations
- Meets all relevant British Standards

Material and colour choice

- 9000 polymeric dpc accessories are moulded in 2.0mm thick medium density polyethylene. They do not contain any pitch, tar or bitumen. Available in black only

Products in the system

Corner units

For use where a cavity tray must turn the corner of a building

Change of level units

For use where the cavity tray steps up or down along its run

Stopend units

For sealing off the ends of the cavity tray at its start and finish

Jointing tape

For sealing lapped joints in the DPC or for sealing the DPC on to the accessories

Joint supports

For fitting below lapped joints in the DPC to provide support and allow the jointing tape to be sealed correctly

Installation advice

- As with the DPC, accessories should always be bedded on to fresh mortar, never dry bedded. The masonry laid over the DPC should also be bedded on to fresh mortar so that the DPC is approximately half way through the thickness of the mortar joint
- DPC must be lapped on to the accessory by a minimum of 100mm
- All lapped joints must be fully sealed with jointing tape. It is essential that the jointing surfaces are clean and dry or the jointing tape will not seal correctly

Please see technical section for more details.

How to order

- State the wall construction, cavity width and the rise which is required across the cavity
- If you need a special, tailor-made accessory - please supply a dimensioned sketch detailing your requirements

Bill of quantity

NBSPlus

F30 Accessories/sundry items for brick/block/stone walling

Clause

- 380 PREFORMED DPC/CAVITY TRAY JUNCTION CLOAKS/STOPENDS
- Manufacturer: **Timloc Building Products, Rawcliffe Road, Goole, East Yorkshire, DN14 6UG. Tel: 01405 765567, Fax: 01405 720479. Web: www.timloc.co.uk**
 - Type(s) and location(s): Preformed stopend units to be positioned at the start and finish of a run of cavity trays.
 - Seal all laps with dpcs and/or cavity trays using adhesive/mastic in accordance with manufacturer's recommendations to ensure a fully watertight installation.
 - Reference: **9000 Stopend Unit (RH/LH)**
 - Cavity Rise: **(150mm or 225mm)**
 - Cavity Width: **(50mm, 75mm and 100mm)**

Product codes

Built in at 150mm rise

Description	Handing	Product codes		
		to suit cavity widths of		
		50mm	75mm	100mm
Stop end units - Full height	RH	9010	9012	9014
Stop end units - Full height	LH	9011	9013	9015
Stop end units - 75mm high (sloping)	RH	9045	9047	9049
Stop end units - 75mm high (sloping)	LH	9046	9048	9050
Stop end units - 75mm high	Multi	9024	9024	9024
Corner units	-	9001	9002	9003
Joint supports	-	9026	9027	9028
Change level unit - 75mm step	Multi	9060	9063	9066
Change level unit - 150mm step	Multi	9061	9064	9067
Change level unit - 225mm step	Multi	9062	9065	9068
Jointing tape - 22.5m roll	-		9040	

Built in at 225mm rise

Description	Handing	Product codes		
		to suit cavity widths of		
		50mm	75mm	100mm
Stop end units - Full height	RH	9018	9020	9022
Stop end units - Full height	LH	9019	9021	9023
Stop end units - 75mm high (sloping)	RH	9051	9053	9055
Stop end units - 75mm high (sloping)	LH	9052	9054	9056
Stop end units - 75mm high	Multi	9024	9024	9024
Corner units	-	9004	9005	9006
Joint supports	-	9030	9031	9032
Change level unit - 75mm step	Multi	9070	9073	9076
Change level unit - 150mm step	Multi	9071	9074	9077
Change level unit - 225mm step	Multi	9072	9075	9078
Jointing tape - 22.5m roll	-		9040	