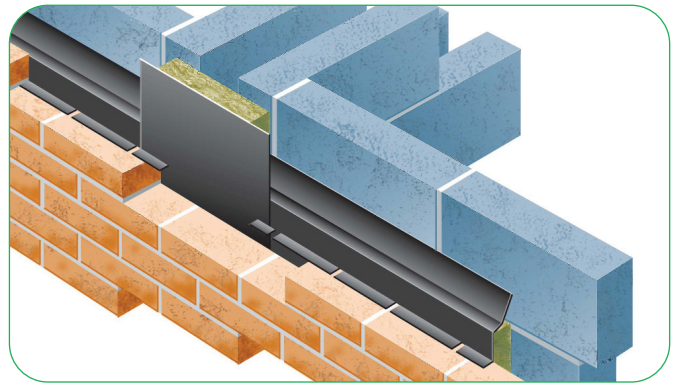


Acousdpc vertical cavity stops

Vertical acoustic fire-rated
cavity stop and DPC



Use

- Effectively reduces the transmission of flanking noise at party wall and external wall junctions
- As a fire stop with integrated DPC

Features and benefits

The Acousdpc has been developed to offer vertical protection and complement the horizontal Acoustray and Acousformer systems in minimising flanking noise transmission along the cavity of an external cavity wall at the intersection of a party wall. The Acousdpc also operates fully as an effective fire barrier cavity stop and in conjunction with the polythene DPC has no risk of water penetration.

Where a party wall meets the cavity wall, Building Regulations stipulate the use of a mineral wool closer for sound insulation purposes. The NHBC requires that any such closer is protected by a suitable DPC. The Acousdpc has been developed to meet these requirements.

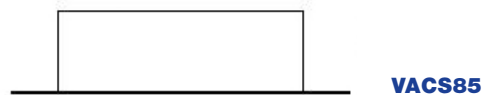
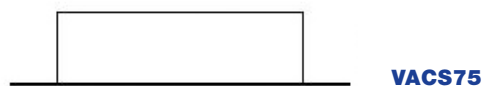
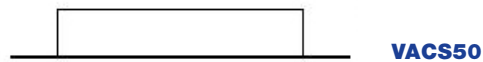
- Complies with Building Regulations Part E & B
- Fully compatible with horizontal Acoustray
- Excellent sound insulation properties
- As a fire stop achieves 4 hours (240 minutes) fire integrity to BS 476 Part 20 : 1987
- Cavity options available
- Self supported by compression fit
- Easily installed

Quality

- Satisfies all NHBC requirements
- Manufactured to BS EN ISO 9001:2000
- Complies with Building Regulations Part E 'Resistance to the passage of sound'
- Complies with Building Regulations Part B 'Internal fire spread (structure)'
- Complies with Robust Details edition 2 (Jan 2005)

Material and colour choice

- Manufactured with BS6515 Polythene DPC
- Supplied in 1.2 metre lengths
- Cavity options available
- Rockfibre insulation slab
- 260mm width insulation



Acousdpc vertical cavity stops

Vertical acoustic fire-rated cavity stop and DPC

Page 2 of 2

Installation advice

Installation must follow good practice for the detailing of damp proof courses, as set out in the relevant clauses of BS 5628: Part 3, BS 8215 and BS 8000: Part 3.

Acousdpc should be built in as brickwork/block work proceeds.

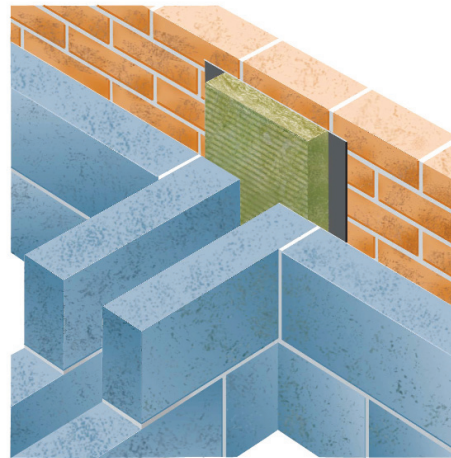
The DPC projects beyond the insulation by 50mm on each side and should be installed to compress against the inside face of the outer leaf.

Supplied in 1.2mtr lengths of insulation with an additional 100mm overlap of DPC and to cavity size required. Units easily cut on site for detailing.

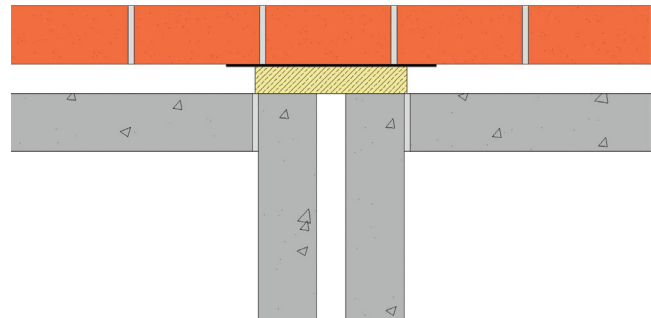
Where more than one length is required, joining lengths is by simply butt jointing together. The upper piece must be installed with the 100mm DPC extension at the bottom, lapping to the outside of the lower piece ensuring a tight butt joint of the insulation.

Vertical protection is given without breaks at floor level, but when installed in conjunction with the horizontal Acoustray, the horizontal tray will stop and restart around the vertical. To allow both systems to intersect simply notch a cut into the 50mm dpc overhang and slot over the horizontal Acoustray.

Due to the flexible nature of the rockfibre insulation some local delaminating may occur during site handling or installation. This does not detract from the performance of the product.



Junction between external cavity wall & party wall



Bill of quantity

F30 Accessories/sundry items for brick/block/stone walling

Clause

370 PREFORMED CAVITY TRAY / ACCESSORIES

- Manufacturer: **Timloc Building Products, Rawcliffe Road, Goole, East Yorkshire, DN14 6UQ. Tel: 01405 765567, Fax: 01405 720479. Web: www.timloc.co.uk**

- Type(s) and location(s): Acousdpc – FireRated acoustic cavity stop & dpc to be installed vertically as work proceeds. Position Acousdpc's vertically where a party wall meets the cavity wall, supplied in 1.2 mtr lengths and butt jointed. Fixed in conjunction with Timloc Acoustray & Acousformer.

- Reference: **VACS Range**

- Options: **VACS50 – 50mm cavity**
VACS65 – 65mm cavity
VACS75 – 75mm cavity
VACS85 – 85mm cavity
VACS100 – 100mm cavity

Product codes

Acousdpc fire rated cavity stop

Cavity size	Length	Dimensions	Qty	Product code
50mm cavity	1.2mtr	360 x 260 x 50mm	10	VACS50
65mm cavity	1.2mtr	360 x 260 x 65mm	*	VACS65
75mm cavity	1.2mtr	360 x 260 x 75mm	8	VACS75
85mm cavity	1.2mtr	360 x 260 x 85mm	*	VACS85
100mm cavity	1.2mtr	360 x 260 x 100mm	6	VACS100

* to order